

**Information meeting ERASMUS+
placements 2021/2022 (during and after studies)
studies, placements (after studies) 2022/2023**



Information meeting ERASMUS+

DEADLINE



➤ **RULES OF RECRUITMENT AND CRITERIA**

Studies – from **2** to 12 months (semester, one year)

➤ **RULES OF RECRUITMENT AND CRITERIA**

Placements during and after studies (recent graduates) – from 2 to 12 months

SIMILAR RULES, DIFFERENT SCHEDULE

Rules of recruitment according to Regulations no 17/XV R/2019 from 27.02.2019:

<http://www.umed.wroc.pl/erasmus-program>

[https://www.umw.edu.pl/sites/default/files/erasmus/files/Zasady_Kwalifikacji_STUDIA_EN\(1\).pdf](https://www.umw.edu.pl/sites/default/files/erasmus/files/Zasady_Kwalifikacji_STUDIA_EN(1).pdf)

[https://www.umw.edu.pl/sites/default/files/erasmus/files/Zasady_Kwalifikacji_praktyki_EN\(1\).pdf](https://www.umw.edu.pl/sites/default/files/erasmus/files/Zasady_Kwalifikacji_praktyki_EN(1).pdf)

Deadlines:

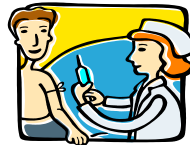
- Studies - until 15 March
- Placements – until 30 November, until 15 March (recent graduates)

Information meeting ERASMUS+



➤ STUDIES:

- place – university which has the agreement with UMW for certain field of studies



➤ PLACEMENTS:

- place – institution which has the agreement with UMW or place found by the student (**suggested**)

<https://www.umed.wroc.pl/erasmus-uczelnie-partnerskie>

[https://www.umw.edu.pl/sites/default/files/erasmus/files/Praktyki_2022\(5\).pdf](https://www.umw.edu.pl/sites/default/files/erasmus/files/Praktyki_2022(5).pdf)

ATTENTION! When choosing a place pay attention to the faculty.

ATTENTION! Student can not ask about an extra place in the institution which has the agreement with UMW. It is not a place found by the student.

Information meeting ERASMUS+



➤ **Novelties in the Erasmus+ programme 2021-2027**

International mobilities: possibility to go to countries outside the European Union (UE).

Programme countries (UE + Lichtenstein, Luxemburg, Norway, Turkey, Serbia, Northern Macedonia)

i partner countries (outside UE).

Scholarship (rate per month) depends on country group; One rate in case of partner countries:

https://www.umw.edu.pl/sites/default/files/erasmus/files/uf_zal_iv_pl_2021_ka1_he_stawki.pdf

Switzerland, Great Britain (scholarship the same as in case of programme countries).

In case of mobilities to partner countries receiving side must be the university and there is supposed to be the agreement signed.

Information meeting ERASMUS+



➤ Who may take part in the programme:

- completing 1 year of studies (applies to studies),
- minimum average grade of entire period of studies: 3,0,
- knowledge of the language of instruction of receiving university (or excellent knowledge of English in case a language of instruction is English),
- **students of last year can participate in the programme (medicine: studies – NO, placements : YES),**
- the same student may participate in the ERASMUS+ programme a few times providing:
 - a) it is maximum 12 months per each cycle of studies,
 - b) it is maximum 24 months per one-cycle of studies.
- selected student might benefit from the scholarship providing a year of studies prior to departure is completed.

Information meeting ERASMUS+

- in case of recent graduates the student must be selected at the last year of studies,
- in case of recent graduates - the duration of a traineeship by recent graduates counts towards the 12 months maximum of the cycle during which they apply for the traineeship,
- in case of multiple mobility a one year break between the mobilities is required (applies to studies).



Information meeting ERASMUS+

➤ Applications on-line available at following websites:

<https://www.umw.edu.pl/erasmus-praktyki>

<https://www.umw.edu.pl/erasmus-studia>

<https://erasmus-outgoing.umw.edu.pl/>



You should upload scanned documents to application:

- starting from academic year 2020/2021 students do not have to attach certificates of average grade of entire period of studies prior to departure (information is provided by dean's office),
- letter of intent in case of placements (place found by the student; **might be sent later**),
- certificates and documents regarding extra criteria of selection,
- certificate of disability and/or maintenance scholarship if applies.



Information meeting ERASMUS+



- You should sign up for a language exam when filling in application on-line (in case of mobilities to Germany, Austria – German, to France – French, to other countries – English).
- ❑ students who go to the country where the language of instruction is their mother tongue do not have to pass a language exam and get 5
- ❑ grade of the language exam might be the same as the one obtained during a previous recruitment providing there was not more than 9 months break,
- ❑ in exceptional cases (placements) is possible to go to Germany, Austria or France and pass an English exam providing host side accepts this (written acceptance).

Information meeting ERASMUS+



- **Deadlines:**
 - **Studies - until 15 March**
 - **Placements – until 30 November, until 15 March (recent graduates only)**
- **The base of recruitment of the student is the number of points awarded for:**
 - ❑ **average grade of entire period of studies prior to departure,**
 - ❑ **language exam (carried out by the Department of Languages),**
 - ❑ **certified documents of criterias of recruitment.**
- **On the basis of submitted documents the International Relations Office (Erasmus Office) prepares the list of applicants willing to go abroad according to the awarded points.**
- **In case of the same number of points awarded the order is made by average grade of entire period of studies prior to departure.**

Information meeting ERASMUS+



➤ The following rules apply to calculation of points:

▢ average grade

students		doctoral students	
average grade	awarded points	average grade	awarded points
3.00 – 3.50	6	3.76 – 4.00	8
3.51 – 3.75	7	4.01 – 4.25	9
3.76 – 4.00	8	4.26 – 4.50	10
4.01 – 4.25	9	4.51 – 4.75	11
4.26 – 4.50	10	4.76 – 5.00	12
4.51 – 4.75	11		
4.76 – 5.00	12		

bardzo dobry (5) 4
ponad dobry (4,5) 3
dobry (4) 2
dość dobry (3,5) 1



UNIWERSYTET MEDYCZNY

Attention: grade of language of instruction (French, German) in case of mobilities of studies can not be lower than 3.5.

Information meeting ERASMUS+

➤ extra criterias of selection:

- a) active participation in the Students' Science Associations – minimum 1 year (no matter how many associations a student is a member of) – 1 point,
- b) research works presented in conferences of the Students' Science Associations or published in handouts of that conferences (no matter how many research works were presented or published) – 1 point,
- c) research works presented or published in conferences or published in scientific journals (no matter how many research works were presented or published) – 1 point,
- d) awards given to a student during the studies – Ministry, Rector's (except for Rector's scholarship) or University awards (no matter how many) – 1 point,
- e) foreign interships, foreign vocational courses or workshops (no matter how many) – 1 point,
- f) work for student's life (confirmed by the organisation and university authorities) – 1 point,
- g) work for the Erasmus+ programme at the home university - 1 point.



Information meeting ERASMUS+

Timetable of recruitment of students

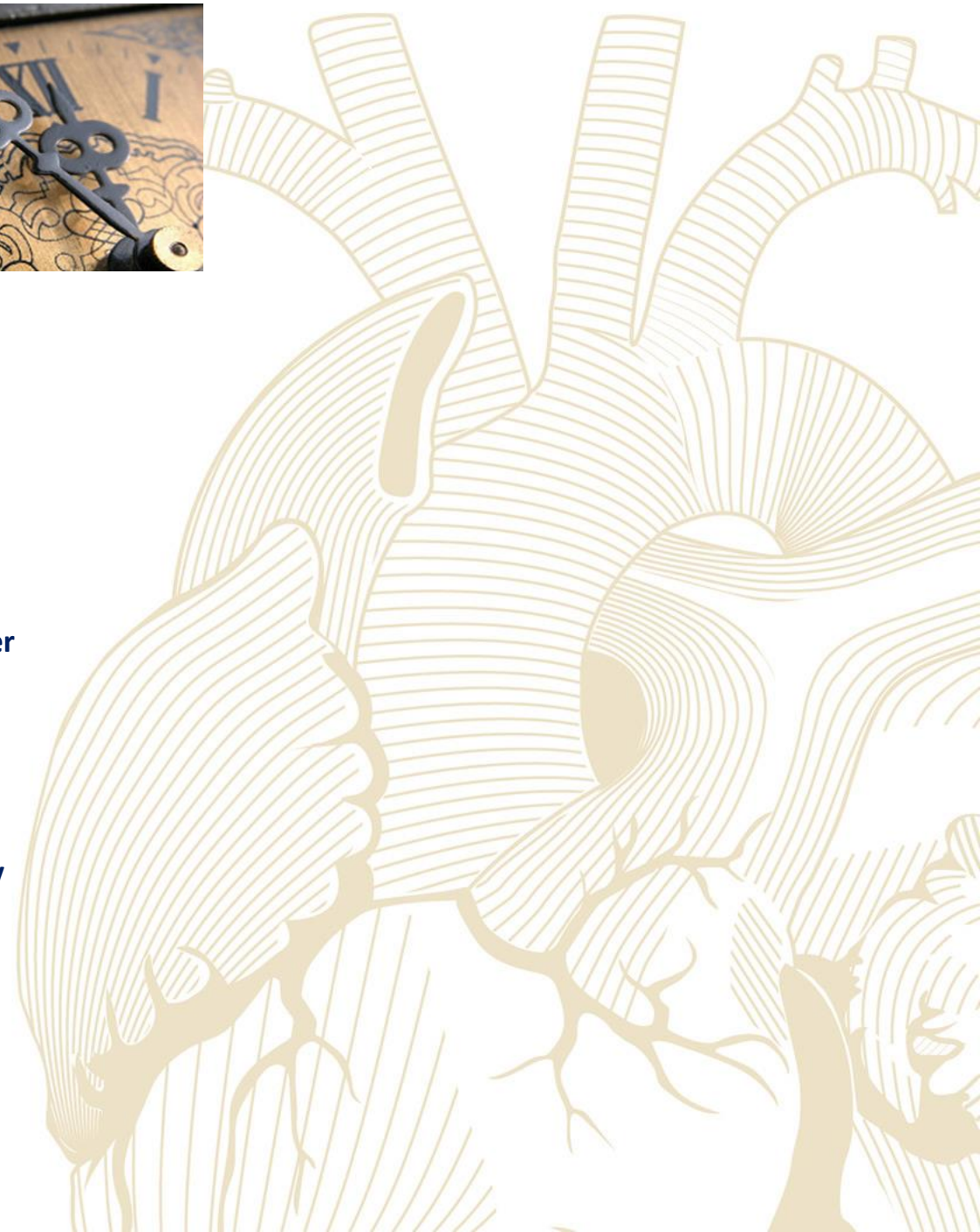
STUDIES, PLACEMENTS (RECENT GRADUATES)

- 1) submitting application on-line and additional documents - until 15 March,
- 2) language examination - until 30 March,
- 3) interview with a relevant board of recruitment – until 15 April,
- 4) announcement of the result of the recruitment – until 20 April,
- 5) organisational meeting with the accepted students – until 25 April,
- 6) submitting documents to be sent to partner universities – until 10 May.

PLACEMENTS

- 1) submitting application on-line and additional documents - until 30 November
- 2) language examination – until 15 December
- 3) interview with a relevant board of recruitment – until 15 January
- 4) announcement of the result of the recruitment – until 20 January
- 5) organisational meeting with the accepted students – until 25 January
- 6) submitting documents to be sent to partner universities – until 10 February

Meeting will take place at the platform MS Teams.



Information meeting ERASMUS+



➤ Financial conditions during a student's stay abroad cover:

- ❑ Erasmus+ scholarship,
- ❑ grant (either scientific or social) awarded by the student at the home university,
- ❑ **extra funds for students with disability and those who receive maintenance scholarship,**
- ❑ **„green travel”: travel costs resulting from a return journey of the entire route (and not part of it; more than 50%) by means of low-emission transport <https://www.umw.edu.pl/erasmus-program>**
- ❑ **travel costs apply only to mobilities to partner countries (if the university agrees): <https://www.umw.edu.pl/content/nawosci-w-programie-erasmus-2021-2027>**

Amounts of scholarship:

Placements 2021/2022 – information at the website: <http://www.umed.wroc.pl/erasmus-program>

Studies 2022/2023 – no information

➤ Language courses:

- ❑ Free courses on-line (OLS platform – Online Linguistic Support),
- ❑ refund of costs of language course (excluding English, French, and German) which takes place before the studies at partner universities start. The amount is agreed each year.

Information meeting ERASMUS+

➤ New coordinators at the faculty of medicine

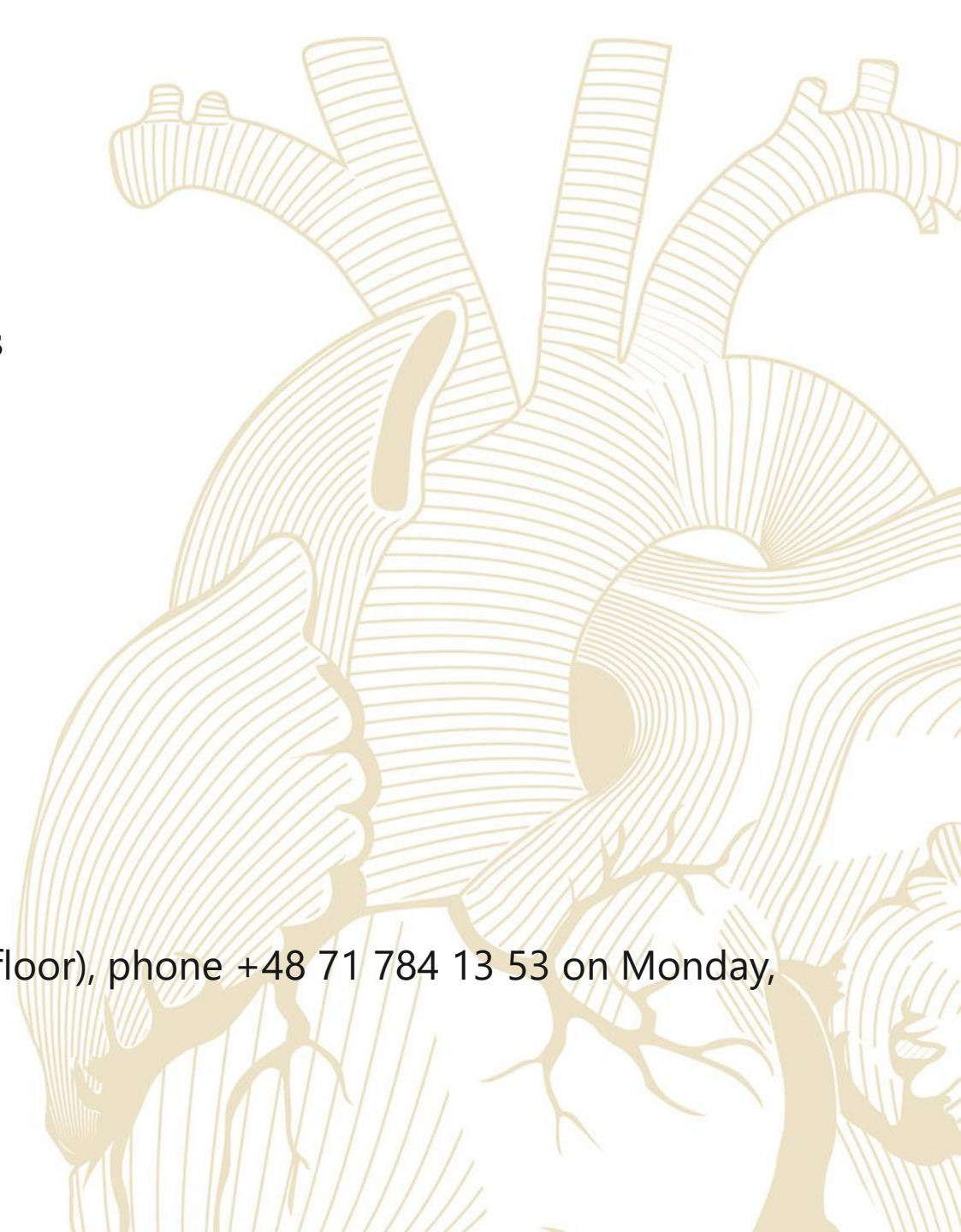
• **Adrianna Nowicka – Czudak MSc - outgoing students**

Zakład Fizjologii
ul. Chałubińskiego 10
50-368 Wrocław
tel. +48 71 784 14 25
e-mail: adrianna.nowicka@umw.edu.pl

• **Dr. Zygmunt Domagała - incoming students**

Zakład Anatomii Prawidłowej
ul. Chałubińskiego 6a
50-368 Wrocław
tel. +48 71 784 13 31
e-mail: zygmunt.domagala@umw.edu.pl

Coordinators are available at ul. T. Chałubińskiego 6a (2nd floor), phone +48 71 784 13 53 on Monday, Wednesday, Thursday from 11:00 am until 2 pm.



Information Meeting ERASMUS+

Sława Ksenycz slawa.ksenycz@umw.edu.pl

Dominika Lucińska dominika.lucinska@umw.edu.pl

Uniwersytet Medyczny im. Piastów Śląskich we Wrocławiu

International Relations Office

ul. T. Chałubińskiego 6a

50-368 Wrocław

tel: +48 71 784 16 85

<https://www.umw.edu.pl/erasmus-koordynatorzy>



UNIwersytet Medyczny
IM. PIASTÓW ŚLĄSKICH WE WROCLAWIU

